

NATMAN[®]

2-WAY 100 SERIES BALL VALVES



- For working pressure up to 1000psig (69bar)
- For use with 1/4"~1" tube and piping system

D-lok[®]

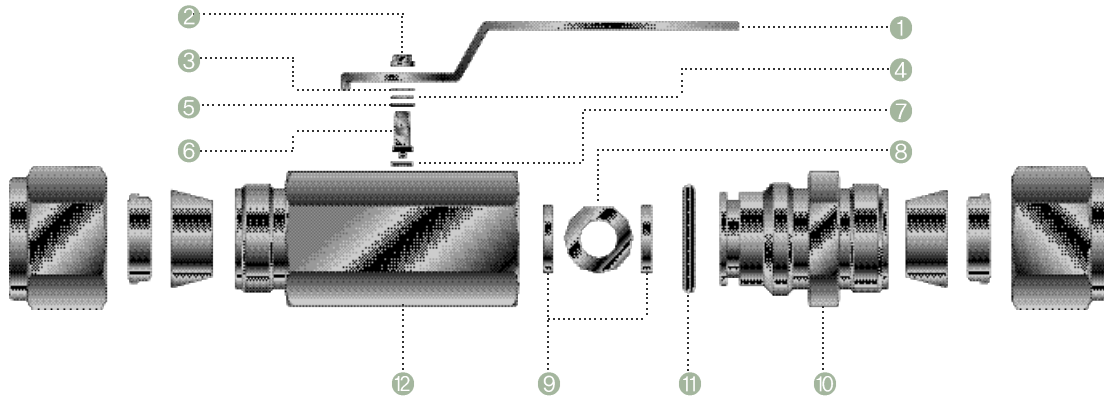
Design Feature

- Compact design with one piece hexagon body construction.
- 2-way straight pattern.
- Free floating ball design provides seat wear compensation.
- Micro-finished ball provides a leak-tight seal.
- Positive and safe handle stop.
- Low operating torques with stainless steel lever handle.
- Provide quick 1/4 turn on-off control.
- Color coated stainless steel lever handle.
- Handle indicate flow direction.
- Various end connections.

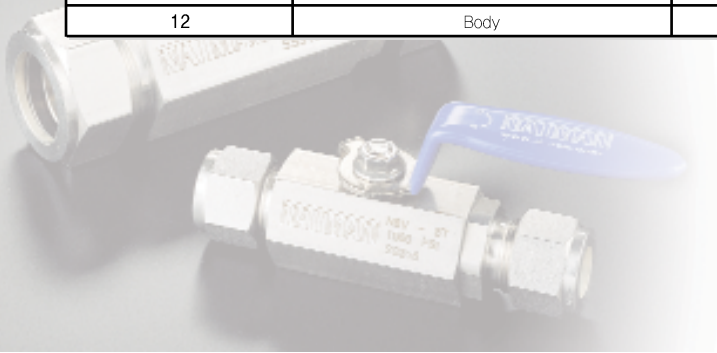
Application

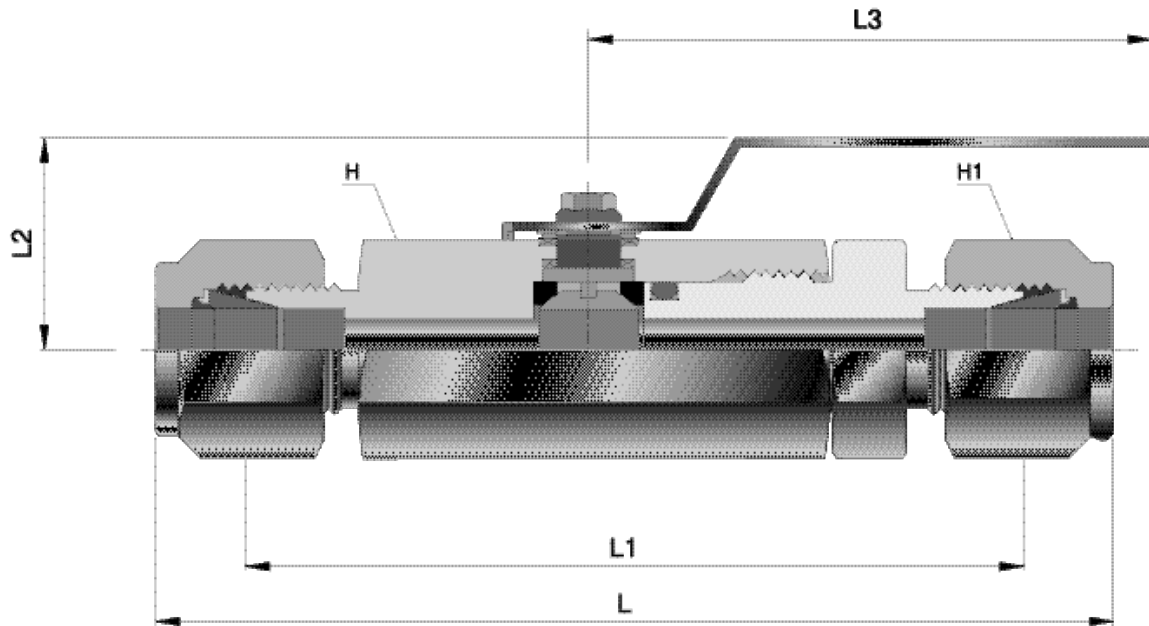
Fuel Lines, Refineries, Chemical Plants, Steel Mills, Heavy Vehicles.

Materials of Construction



Item	Part Description	Stainless Steel	Brass
1	Handle	SS304	
2	Lock Nut	SS304	
3	Washer	SS304	
4	Washer	SS304	
5	Outer Packing	Reinforced PTFE	
6	Stem	SS316	
7	Inner Packing	Reinforced PTFE	
8	Ball	SS316	
9	Seat Ring	Reinforced PTFE	
10	End Connector	SS316	Brass / B16
11	O-Ring	NBR	
12	Body	SS316	Brass / B16



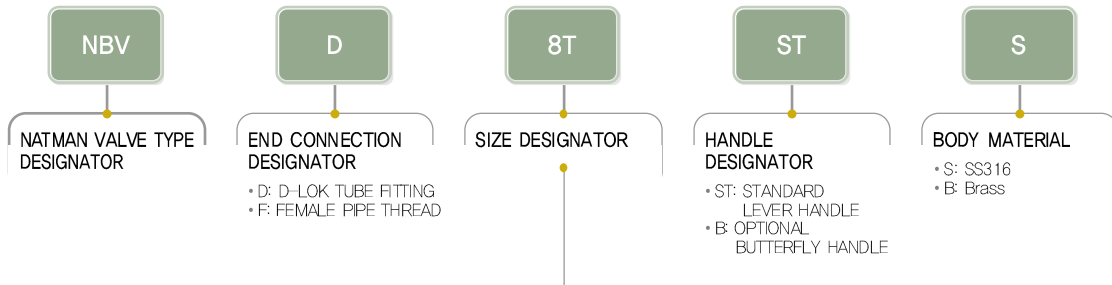


Ordering Information and Table of Dimensions

Basic Part No.	End Connections	Dimensions (mm)					Orifice (mm)	Weight (kg)
	Both ends	L	L1	H	H1	L2		
NBVD-6M	6mm D-LOK	79,5	31,0	17,4	14,2	60	5,0	0,14
NBVD-4T	1/4" D-LOK	79,5						0,14
NBVF-4N	1/4" FEMALE NPT	40						0,07
NBVD-10M	10mm D-LOK	90	40,0	22,2	17,4	80	7,5	0,23
NBVD-6T	3/8" D-LOK	90						0,23
NBVF-6N	3/8" FEMALE NPT	45	42,0	26,9	22,2	80	9,0	0,14
NBVD-12M	12mm D-LOK	99						0,36
NBVD-8T	1/2" D-LOK	99						0,36
NBVF-8N	1/2" FEMALE NPT	54,5	51,0	31,7	28,5	100	12,5	0,22
NBVD-16M	16mm D-LOK	109						0,51
NBVD-10T	5/8" D-LOK	109						0,51
NBVF-12N	3/4" FEMALE NPT	61	55,0	38,0	38,0	100	16,0	0,34
NBVD-12T	3/4" FEMALE NPT	110						0,57
NBVD-16T	1" D-LOK	134						0,87
NBVF-16N	1" FEMALE NPT	75						0,62

* All dimensions shown are for reference purposes only, are subject to change.

How to Order



• NPT(ISO/BSP)

Thread(In.)	1/4	3/8	1/2	3/4	1
Designator	4N(R)	6N(R)	8N(R)	12N(R)	16N(R)

• Tube

Fractional Tube	O.D.(In.)	1/4	5/16	3/8	1/2	5/8	3/4	7/8	1
	Designator		4T	5T	6T	8T	10T	12T	14T
Metric Tube	O.D.(mm)	6	8	10	12	15	16	22	25
	Designator		6M	8M	10M	12M	15M	16M	22M

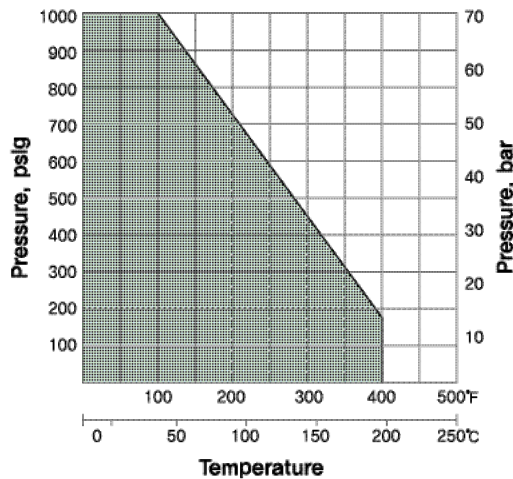
Factory Testing

Every NATMAN 100 Series Ball Valve is adjusted for factory testing at 1000 psig (69 bar) with nitrogen. Seat tests have a maximum allowable leak rate of 0.1 std cm³/min. The packing is tested with nitrogen for no detectable leakage.

Cleaning and Packaging

All valves are cleaned and packaged in accordance with D-Lok standard cleaning and packaging procedures.

Pressure-Temperature Ratings



Safety in Valve Selection

Selections of valve function and rating, proper installation, material compatibility, operation and maintenance of these valves are the responsibility of the user.

The system design, application must be taken into consideration to ensure optimal performance and safety. We accept no liability for any improper selection, installation, operation or maintenance.